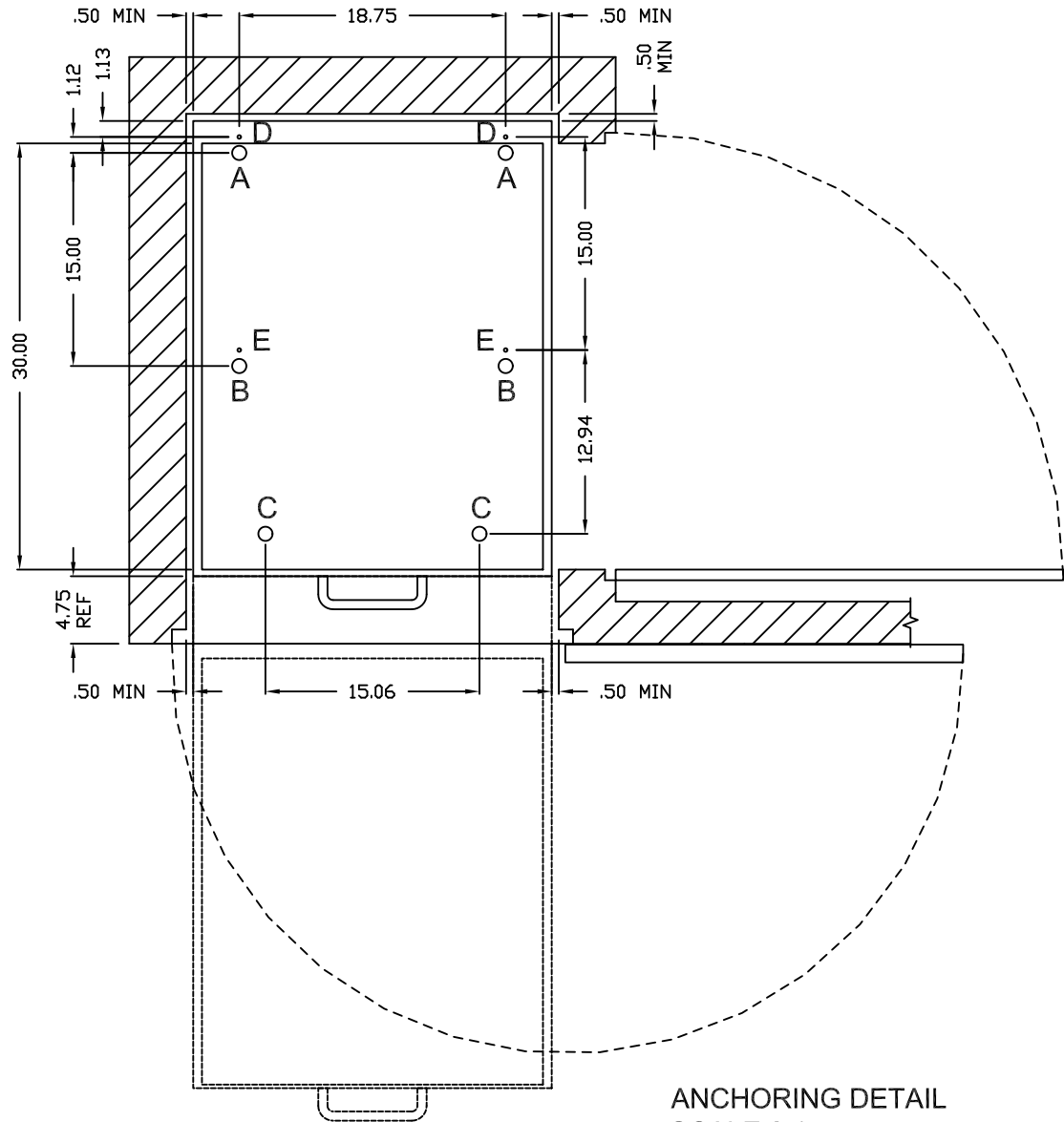


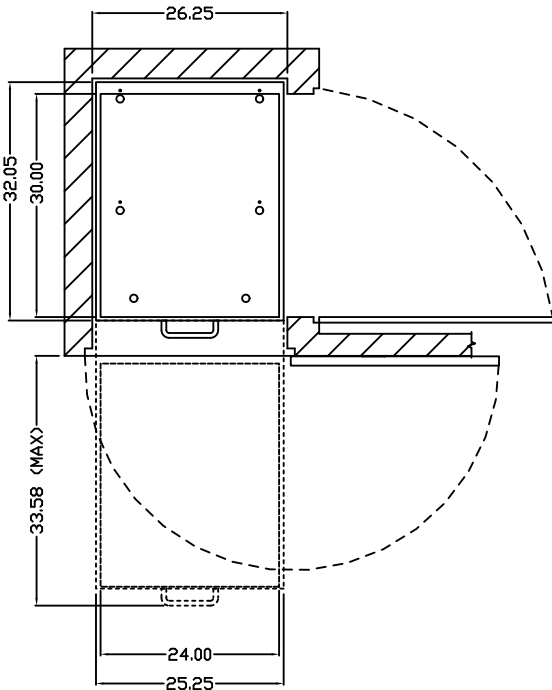
		'WORST CASE' FORCE REQUIREMENTS					
SYSTEM CONFIG	CARRIAGE WIDTH	CARRIAGE LENGTH	LEVELER 'A' SUPPORT	LEVELER 'B' SUPPORT	LEVELER 'C' SUPPORT	ANCHOR 'D' (PULL OUT)	ANCHOR 'E' (PULL OUT)
SINGLE ENTRY LEFT/RIGHT	24"	24"	400#	74#	900#	350#	650#
	24"	30"	400	74	900	350	650
	24"	36"	400	74	900	350	650

*FORCES CALCULATED PER BOLT
(SHELF WEIGHT = 15lb/ft LENGTH-WIDTH, UNIFORMLY DISTRIBUTED)
ANCHORS TO BE Ø 5/16"-18 GRADE 5 THREADED BOLTS
DO NOT USE WOOD AS A MOUNTING SUBSTRATE TO AVOID LONG TERM INDENTING

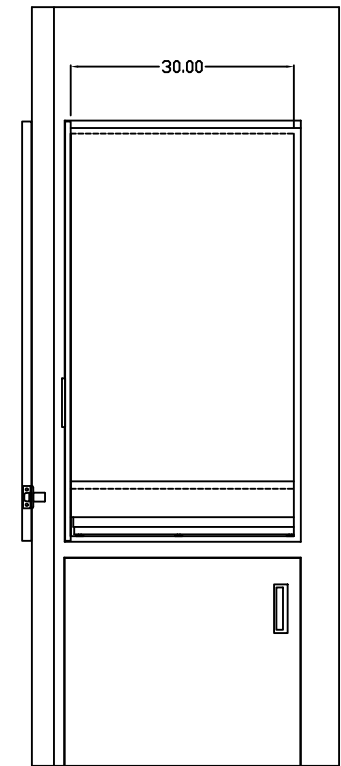
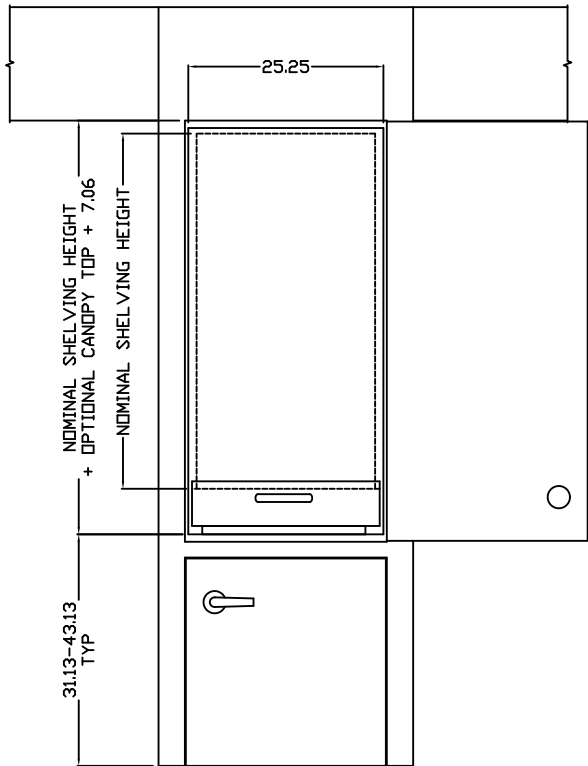


ENCLOSURE CONSTRUCTION GUIDELINES

- NOTES:
- 1.) CABINET/CLOSET AND MOUNTING SURFACE BY OTHERS.
 - 2.) LOCAL FIRE CODES MAY APPLY. THE RESPONSIBILITY TO ENSURE APPLICABLE CODES HAVE BEEN MET IS THAT OF OTHERS.
 - 3.) DOORS, WALLS, AND WALL THICKNESSES SHOWN ARE FOR ILLUSTRATIVE PURPOSES ONLY. ACTUAL DIMENSIONS TO BE FINALIZED BY OTHERS.
 - 4.) DIMENSIONS SHOWN ARE TO PROVIDE FINISHED OPENING SIZES ONLY AND INCLUDE RECOMMENDED MINIMUM CLEARANCES.
(DIMENSIONS SUBJECT TO CHANGE WITHOUT NOTICE.)



FINISHED OPENING



TOLERANCES UNLESS OTHERWISE SPECIFIED		DWG NO.		REV	
.XX±.01		SRI		1/26/09	
.XXX±.005		DATE		DATE	
X°±1°		APVD		SCALE	
SIZE		FSCM NO.		DWG NO.	
D		58928		CoreSTOR S 24x30	
SHEET		OF		DATE	
NTS		A		APPROVED	

COPYRIGHT © 1999 SPACESAVER CORPORATION. ALL RIGHTS RESERVED.
This material is proprietary and confidential, and the disclosure, reproduction (by photocopy, film, blueprint, or otherwise) or incorporation into any information retrieval system without first receiving written approval from Spacesaver Corporation is expressly prohibited by law.